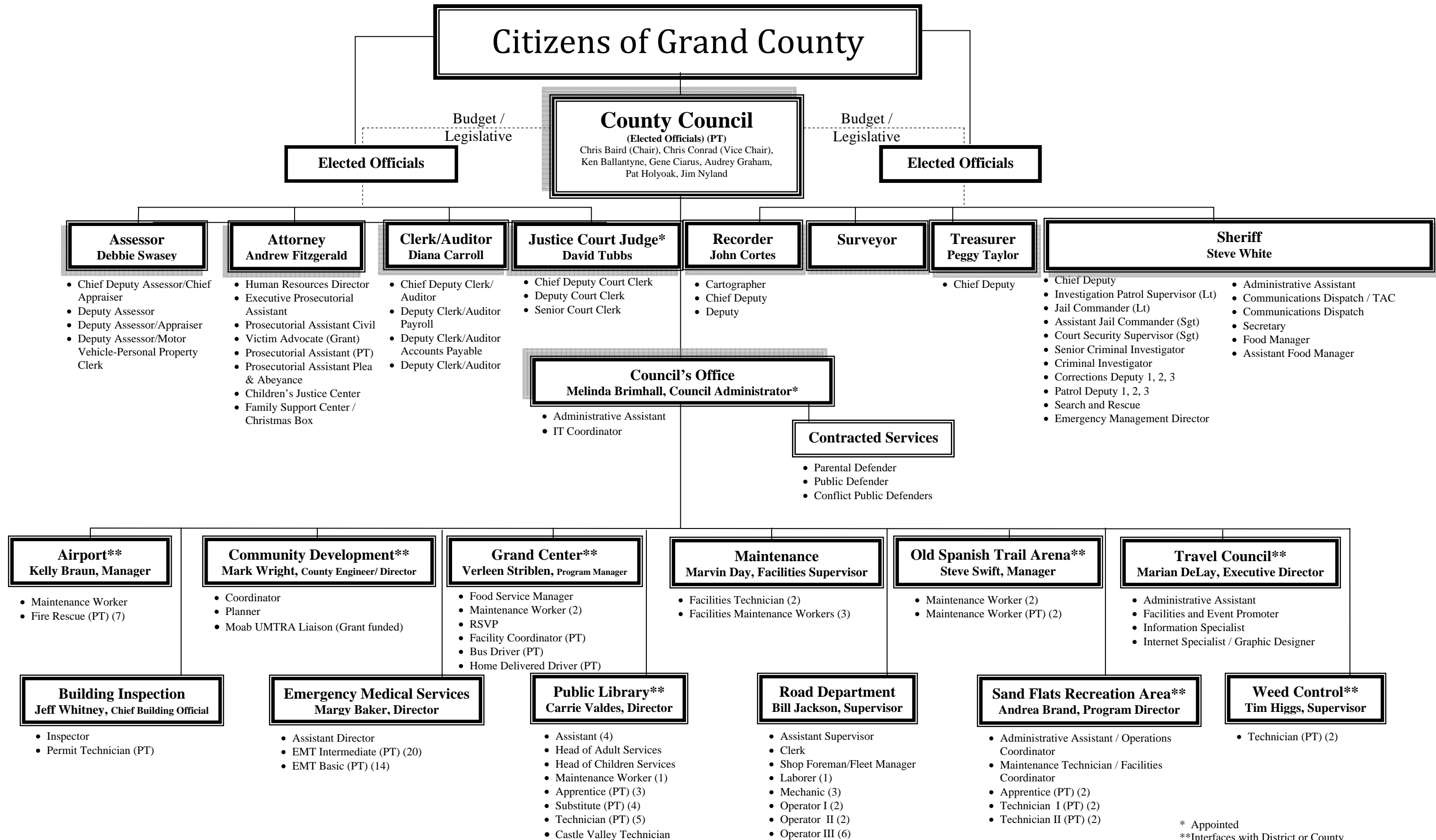


Detailed 2011 Grand County Organizational Chart



Budget /
Legislative

Budget /
Legislative

Elected Officials

Elected Officials

Assessor
Debbie Swasey

- Chief Deputy Assessor/Chief Appraiser
- Deputy Assessor
- Deputy Assessor/Appraiser
- Deputy Assessor/Motor Vehicle-Personal Property Clerk

Attorney
Andrew Fitzgerald

- Human Resources Director
- Executive Prosecutorial Assistant
- Prosecutorial Assistant Civil
- Victim Advocate (Grant)
- Prosecutorial Assistant (PT)
- Prosecutorial Assistant Plea & Abeyance
- Children's Justice Center
- Family Support Center / Christmas Box

Clerk/Auditor
Diana Carroll

- Chief Deputy Clerk/Auditor
- Deputy Clerk/Auditor Payroll
- Deputy Clerk/Auditor Accounts Payable
- Deputy Clerk/Auditor

Justice Court Judge*
David Tubbs

- Chief Deputy Court Clerk
- Deputy Court Clerk
- Senior Court Clerk

Recorder
John Cortes

- Cartographer
- Chief Deputy
- Deputy

Surveyor

Treasurer
Peggy Taylor

- Chief Deputy

Sheriff
Steve White

- Chief Deputy
- Investigation Patrol Supervisor (Lt)
- Jail Commander (Lt)
- Assistant Jail Commander (Sgt)
- Court Security Supervisor (Sgt)
- Senior Criminal Investigator
- Criminal Investigator
- Corrections Deputy 1, 2, 3
- Patrol Deputy 1, 2, 3
- Search and Rescue
- Emergency Management Director
- Administrative Assistant
- Communications Dispatch / TAC
- Communications Dispatch
- Secretary
- Food Manager
- Assistant Food Manager

Council's Office
Melinda Brimhall, Council Administrator*

- Administrative Assistant
- IT Coordinator

Contracted Services

- Parental Defender
- Public Defender
- Conflict Public Defenders

Airport**
Kelly Braun, Manager

- Maintenance Worker
- Fire Rescue (PT) (7)

Community Development**
Mark Wright, County Engineer/ Director

- Coordinator
- Planner
- Moab UMTRA Liaison (Grant funded)

Grand Center**
Verleen Striblen, Program Manager

- Food Service Manager
- Maintenance Worker (2)
- RSVP
- Facility Coordinator (PT)
- Bus Driver (PT)
- Home Delivered Driver (PT)

Maintenance
Marvin Day, Facilities Supervisor

- Facilities Technician (2)
- Facilities Maintenance Workers (3)

Old Spanish Trail Arena**
Steve Swift, Manager

- Maintenance Worker (2)
- Maintenance Worker (PT) (2)

Travel Council**
Marian DeLay, Executive Director

- Administrative Assistant
- Facilities and Event Promoter
- Information Specialist
- Internet Specialist / Graphic Designer

Building Inspection
Jeff Whitney, Chief Building Official

- Inspector
- Permit Technician (PT)

Emergency Medical Services
Margy Baker, Director

- Assistant Director
- EMT Intermediate (PT) (20)
- EMT Basic (PT) (14)

Public Library**
Carrie Valdes, Director

- Assistant (4)
- Head of Adult Services
- Head of Children Services
- Maintenance Worker (1)
- Apprentice (PT) (3)
- Substitute (PT) (4)
- Technician (PT) (5)
- Castle Valley Technician

Road Department
Bill Jackson, Supervisor

- Assistant Supervisor
- Clerk
- Shop Foreman/Fleet Manager
- Laborer (1)
- Mechanic (3)
- Operator I (2)
- Operator II (2)
- Operator III (6)

Sand Flats Recreation Area**
Andrea Brand, Program Director

- Administrative Assistant / Operations Coordinator
- Maintenance Technician / Facilities Coordinator
- Apprentice (PT) (2)
- Technician I (PT) (2)
- Technician II (PT) (2)

Weed Control**
Tim Higgs, Supervisor

- Technician (PT) (2)

* Appointed
**Interfaces with District or County Commission/Board/Committee
Updated: February 2, 2011