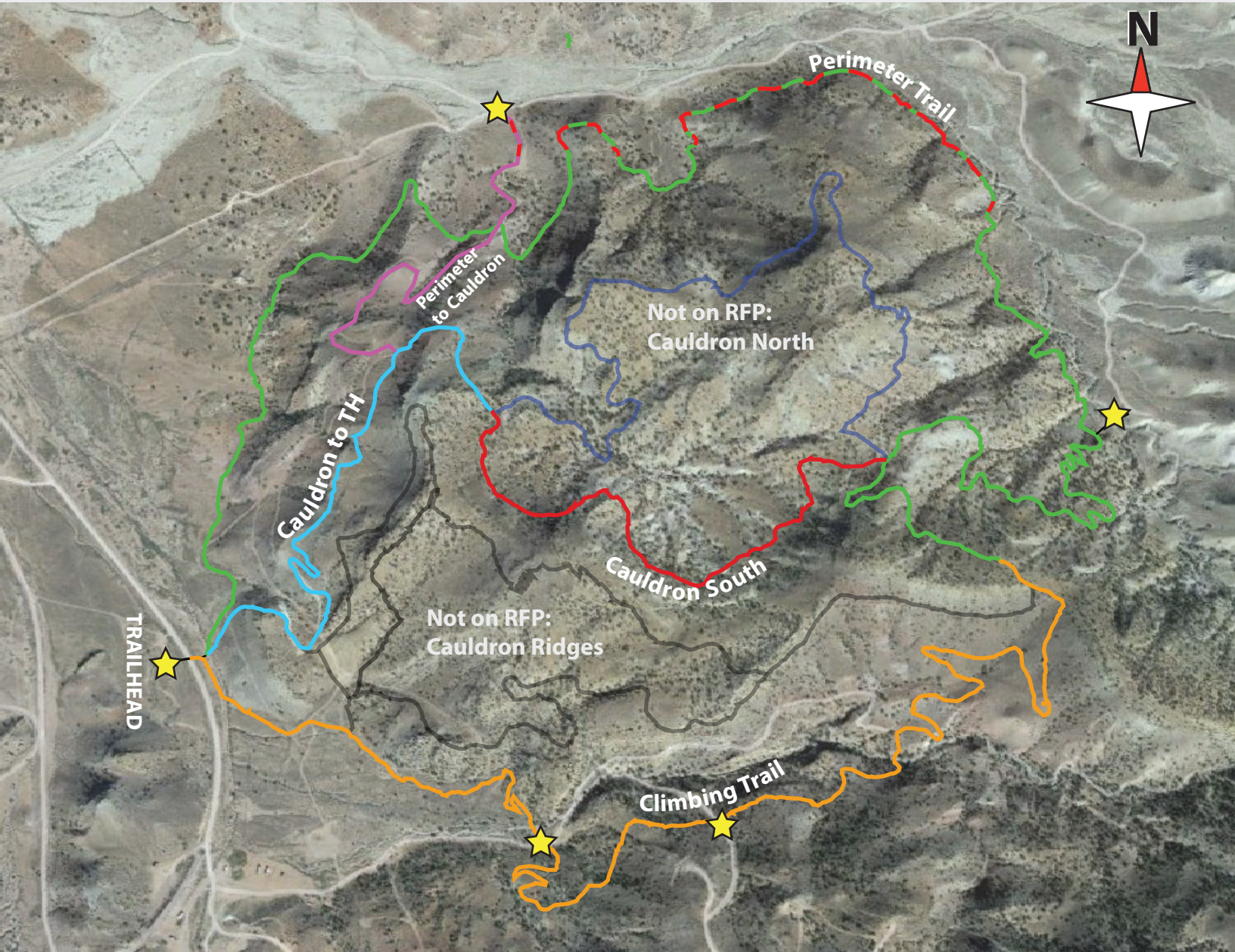


Mud Springs Trail System

Phase 1



★ Machine Access Points

- | | | |
|--|---|----------------|
| | 1. Climbing Trail (from TH) (1.98 Miles, Machine, Beginner) | Group A |
| | 2. Perimeter Trail (3.12 Miles, Machine, Beginner) | |

Trail within Isley's Milk Vetch Protected Habitat Zone

- | | | |
|--|--|----------------|
| | 3. Cauldron to TH (0.76, Machine, Beginner/Intermediate) | Group B |
| | 4. Cauldron South (0.71 Miles, Machine, Beginner/Intermediate) | |
| | 5. Perimeter to Cauldron (0.54 Miles, Machine (Road-to Singletrack Conversion), Beginner/Intermediate) | |

- | | | |
|--|--|---|
| | Cauldron North* (1.31 Miles, Hand, Intermediate) | *NOT part of this RFP, but will be constructed at the same time by a local crew |
| | Cauldron Ridges* (Hand, Advanced) | |